

eLearning terms and conditions



These terms and conditions (the "Terms") govern your use of the Blue Lamp Trust web-based eLearning courses and associated products. If you proceed to use this Website you are agreeing to and will be bound by these terms and conditions.

Definitions

Courses: Textual and graphical aid(s) to learning

Course Provider: The Blue Lamp Trust or any third party provider of a Blue Lamp Trust Course

Materials: Any material, whether written, digital or in any other medium provided by the Blue Lamp Trust in connection with, or as part of, a Course

Client(s): Registered Users

Course Copyright

This material is copyrighted: No part of these material may be copied, photocopied or reproduced in any form or by any means without the permission in writing from The Course Provider. Violation of these laws may lead to prosecution.

All trademarks, service marks, products or services are trademarks or registered trademarks of their respective holders and are acknowledged by the authors.

Limitation of Liability

Every effort has been made to ensure complete and accurate information concerning the material presented in these courses. However, our training website nor the course provider can be held legally responsible for any mistakes in printing or faulty instructions contained within the course.

The authors appreciate receiving notice of any errors or misprints. Information in all of our courses is subject to change without notice.

Companies, names and data used in examples herein are fictitious unless otherwise noted.

There are no warranties, expressed or implied, including warranties of merchantability or fitness for a particular purpose, made with respect to the materials or any information provided to the user herein.

Neither the author, publisher nor our training website shall be liable for any direct, indirect, special, incidental or consequential damages arising out of the use or inability to use the contents of a course.

Payment Policy

Before logins can be provided, The Blue Lamp Trust must be in receipt of full payment from the client.

Refunds Policy

Our Business Administration Manager must receive all requests for refunds, replacements, and adjustments via email or an online request within 7 days after purchase.

Refunds, replacements, adjustments may be considered for:

- Technical problems relating to our systems resulting in a user not being able to view or interact with the courseware. We will NOT consider refunds for technical issues that are not directly related to our eLearning system, including those relating to the broadband speed of the user of our products.

In order to satisfy yourself that your system reached the minimum acceptable broadband speed, press any of the 'CLICK TO VIEW' buttons to run a small demonstration of the modules on our eLearning portal.

- The Business Administration Manager must receive written notification of the problem and be given the opportunity to fix the problem in order for a refund, replacement or adjustment to be considered.

Refunds/Replacements/Adjustments will NOT be considered for:

- Slow performance. The course material is designed to perform over a high-speed broadband connection. However, we have no control over your Internet bandwidth, which can affect performance, causing brief delays in the download speeds for the courses and display of the HTML pages.

The Blue Lamp Trust is unable to offer refunds for accounts that have been partially used in any way or after the time limit has expired.

If the site is out of service for more than 8 hours consecutively, one day will be added to your existing subscription time limit. In all cases of refunding, the decision of the Blue Lamp Trust will be final.

We highly recommend that potential customers view the course outlines before placing an order as we wish all registered users to gain maximum benefit from our course material by ensuring the course selected meets expectations and needs.

Registered User Restrictions

Each registered user to The Blue Lamp Trust eLearning website is granted a unique user ID and password which is used to gain access to the materials therein. Under NO circumstances whatsoever may any registered user share or distribute their user IDs or passwords to third parties. Any breach of this term will result in the immediate suspension of the account.

Under NO circumstances shall Registered Users distribute the courseware contained within this site. Each course is individually licensed and any member found in breach of this term shall have their account suspended immediately.

Minimum System Requirements

The eLearning modules use the latest web technologies to provide an enhanced viewer experience. Courses are delivered using industry standard HTML5 technology. Members are therefore required to have an installed working copy of either Microsoft Internet Explorer Version 11 or higher, Firefox Version 40 or above, Google Chrome Version 35 or Safari Version 8 or above. Our eLearning modules are not guaranteed to display correctly in older browsers, and we therefore recommend you upgrade your browser to their latest versions, which utilise these latest web technologies.

General Use Restrictions

All information, documents, products, software, and services (the "Materials") provided on this Website were provided by or to the Blue Lamp Trust and are the copyrighted work of the Blue Lamp Trust. As stated herein, none of the Materials may be copied, reproduced, distributed or republished in any form or by any means, including, but not limited to, electronic, mechanical, photocopying, recording, or otherwise, without the prior express written permission of the Blue Lamp Trust.

No part of the Website, including logos, graphics, or images, may be reproduced or retransmitted in any way, or by any means, without the prior express written permission of the Blue Lamp Trust. You also may not, without the prior express written permission from the Blue Lamp Trust, "mirror" any Material contained on this Website on any other server.

Nothing on this Website shall be construed as conferring any license or permission under any of the Blue Lamp Trusts' intellectual property rights, whether by implication, or otherwise. You acknowledge sole responsibility for obtaining any such permission.

Permission is granted to display and view the Blue Lamp Trust Materials on this Website provided that: (1) the Materials are viewed on an appropriate web browser similar or newer than those already mentioned above, (2) the use of such Materials is solely for personal, non-commercial and informational use and will not be copied or posted on any networked computer or broadcast in any media, and (3) no modifications of any of the Materials are made. This permission terminates automatically without notice if you breach any of these terms or conditions. Upon termination, you will immediately destroy any downloaded and printed Materials.

Any unauthorized use of any Materials contained on this Website may violate copyright laws, trademark laws, the laws of privacy and publicity, and communications regulations and statutes.

Content Disclaimer

The Blue Lamp Trust is committed to respecting the intellectual property rights of others, and has attempted, in every appropriate case, to obtain permission from the owner of any intellectual rights to use such material. The Blue Lamp Trust may, at its sole discretion, remove courses or elements of courses that may infringe or otherwise violate others' intellectual property rights. Should you wish to notify the Blue Lamp Trust if a suspected copyright infringement you must supply:

- an electronic or physical signature of the person authorized to act on behalf of the copyright owner;
- a description of the copyrighted work that you claim has been infringed;
- a description of where the material that you claim is infringing is located on our Website;
- your address, telephone number, and email address so that we can contact you;
- a statement by you that you have a good faith belief that the disputed use is not authorized by the copyright owner, its agent, or the law; and
- a statement by you, made under penalty of perjury, that the information in your notice to us is accurate and that you are the copyright owner or authorized to act on the copyright owner's behalf. The Blue Lamp Trust's Copyright Officer for notice of claims of copyright infringement on our Website can be reached by using the contact details supplied on the Blue Lamp Trust website.

Links to third party sites

This Website may be linked to other Websites which are not under the control of and are not maintained by the Blue Lamp Trust. The Blue Lamp Trust is not a convenience for the content of those sites. The Blue Lamp Trust is providing these links to you only as a convenience, and the inclusion of any link to such sites does not imply endorsement by the Blue Lamp Trust of those sites.

Disclaimer of Warranty

For unless otherwise explicitly stated, the materials on the website are provided "as is", and are for registered members use only, and all express or implied conditions, representations and warranties, including any implied warranty of fitness for a particular purpose, or non-infringement, are disclaimed, except to the extent that such disclaimers are held to be legally invalid. The Blue Lamp Trust makes no representations, warranties, guaranties as to the quality, suitability, truth, accuracy or completeness of any of the courses contained on the Blue Lamp Trust website. Any questions regarding the courses should be directed to the Blue Lamp Trust via contact details held on our website.

Limitation of Liability

The Blue Lamp Trust shall not be liable for any damages suffered as a result of using, copying, distributing, or downloading the courses. In no event shall the Blue Lamp Trust be liable for any indirect, special, or incidental, or consequential damage (including loss of business, revenue, profits, use, data or other economic advantage) however it arises, whether for breach or in tort, even if the Blue Lamp Trust has been previously advised of the possibility of such damage.

You have sole responsibility for adequate protection and backup of data and/or equipment used in connection with the website and will not make a claim against the Blue Lamp Trust for lost data, re-run time, inaccurate instruction, work delays or lost profits resulting from the use of the courses.

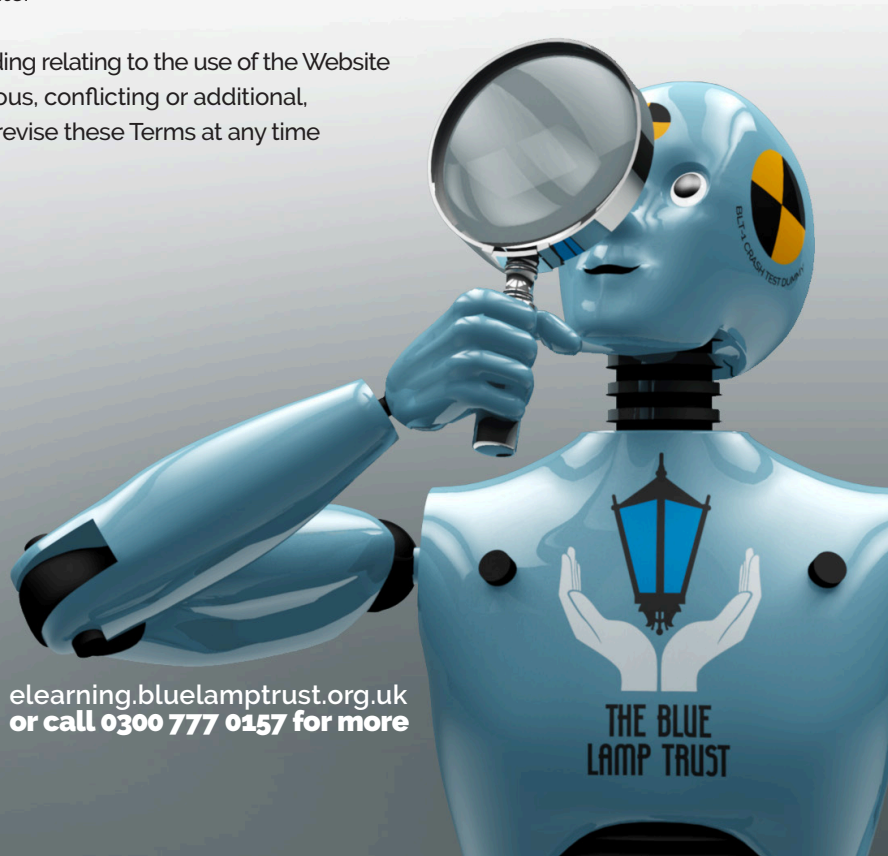
You agree to hold the Blue Lamp Trust harmless from, and you covenant not to sue the Blue Lamp Trust for, any claims based on using the Blue Lamp Trust eLearning products or associated website.

General

This Website could include inaccuracies or typographical errors. The Blue Lamp Trust may make improvements and/or changes to the courses described in this Website at any time without notice. Changes are periodically made to the Website.

These Terms represent the entire understanding relating to the use of the Website and prevail over any prior or contemporaneous, conflicting or additional, communications. The Blue Lamp Trust can revise these Terms at any time without notice by updating this posting.

Jim Bettley
(for and on behalf of the Blue Lamp Trust)



elearning.bluelamptrust.org.uk
or call 0300 777 0157 for more

THE BLUE LAMP TRUST